



## Shopping Cart Castors

## Shopping Cart Castors for Travelator Use

Fixed and swivel castors with steel frames and polyurethane wheels with precision ball bearings, specially designed for safe use on travelators.  
Maximum load capacity tested according to BS EN 12532:1999 requirements.

Fixing System	Single bolt fixing
Frame	Cold pressed steel
Wheel Tread	Polyurethane
Wheel Bearing Type	Precision ball bearings



Picture may differ from actual product

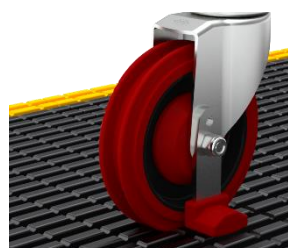
## Features



Travelator / inclined moving walkway compatible polyurethane wheel with precision ball bearing



Pressed steel frames

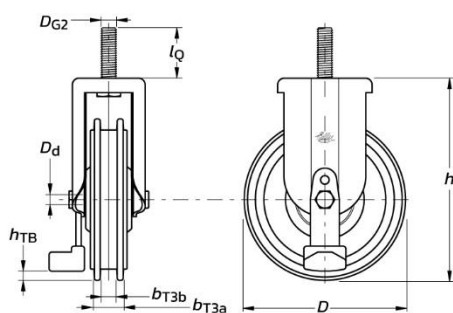


Travelator brake to prevent revolution of the wheel when operated on moving walkways

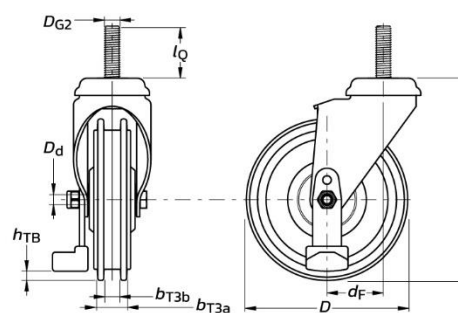


Threadguards to prevent manifestation of threads and any other foreign objects in the wheel hub

## Technical Information



TBND-RK Fixed Castors



TBND-RJ & TBND-FJ Swivel Castors

Order Code	Load Capacity (kg)	Dimensions (unless stated otherwise, dimensions are in millimetres)										Physical Mass (in grams)
		$l_Q$	$D_{G2}$	$D$	$h$	$d_F$	$b_{T3a}$	$b_{T3b}$	$h_{TB}$	$D_d$	Swept Radius	
TBND-RK-125	80	40	M12 × 1,75	125	155	–	22	13	8	8	–	650
TBND-RJ-125	80	40	M12 × 1,75	125	155	43	22	13	8	8	106	730
TBND-FJ-125	80	25	M12 × 1,75	125	155	43	22	13	8	8	106	740

Technical information and dimensions provided above are subject to tolerances