



Edly TPRJ-125-C has achieved 45,27% of Domestic Component Level from Indonesian Ministry of Industry



Edly TPRJB-125-C has achieved 55,41% of Domestic Component Level from Indonesian Ministry of Industry

## Hospital Bed and Medical Equipment Castors

### Steel Framed Hospital Bed Castors with Cover

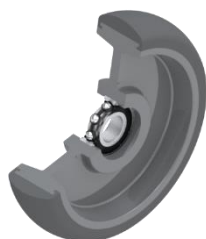
Swivel castors with steel frames, polypropylene covers and TPE wheels. Maximum load capacity tested according to BS EN 12531:1999 requirements.

Fixing System	Single bolt fixing or solid stem with threaded fixing hole
Frame	Cold pressed steel plate
Wheel Tread	Thermoplastic elastomer
Wheel Bearing Type	Precision ball bearings
Brake / Stopper	Total brake (TPRJB type castors)



Picture may differ from actual product

### Features



Precision ball bearings



Pressed steel frames



Foot actuated total brake (TPRJB type castors)



Polypropylene cover to prevent manifestation of dust and other foreign objects

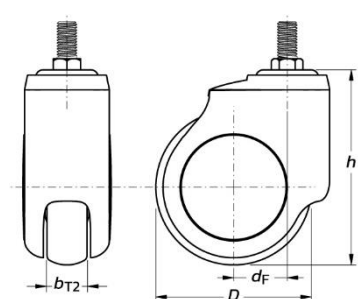


Quick and hassle-free installation with plastic adaptors that would fit easily into the pipe of bed legs.

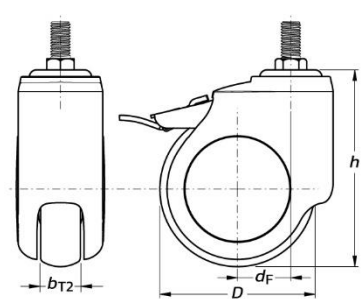
Available in round shape (ø27,3mm, ø28,5mm, ø29,3mm, ø35,5mm and ø39mm) and rectangular shape (27mm × 57mm and 36 × 36mm).

Applicable only to castors with SF16 suffix.

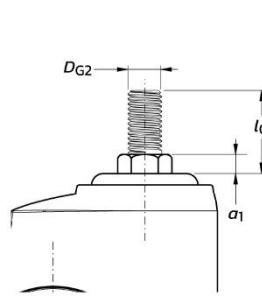
### Technical Information



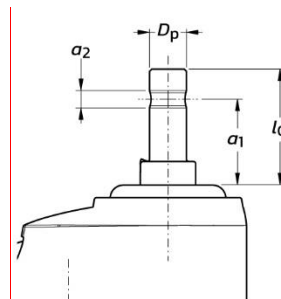
TPRJ Swivel Castors



TPRJB Swivel Castors with Total Brake



Drawing applicable to castors with Single Bolt Fixing (BF58 suffix)



Drawing applicable to castors with Solid Stem Fitting (SF16 suffix)

Order Code	Load Capacity (kg)	Dimensions (unless stated otherwise, dimensions are in millimetres)										Physical Mass (in grams)
		$D_p$	$l_Q$	$D_{G2}$	$a_1$	$a_2$	$D$	$h$	$d_F$	$b_{T2}$	Swept Radius	
TPRJ-125-C-BF58	80	-	39	5/8" UNC	9	-	125	157,1	43	32	105,5	825
TPRJ-125-C-BF12	80	-	29	1/2" UNF	9	-	125	157,1	43	32	105,5	800
TPRJ-125-C-SF16	80	16	50	-	37	M6	125	157,1	43	32	105,5	855
TPRJB-125-C-BF58	80	-	39	5/8" UNC	9	-	125	157,1	43	32	139,6	1.015
TPRJB-125-C-BF12	80	-	29	1/2" UNF	9	-	125	157,1	43	32	139,6	1.000
TPRJB-125-C-SF16	80	16	50	-	37	M6	125	157,1	43	32	139,6	1.045

Technical information and dimensions provided above are subject to tolerances