



Levelling Castors

Steel Framed Castors with Nylon Wheels and Precision Ball Bearings, with Extendable Levelling Feet

Swivel castors with pressed steel frames and nylon wheels, equipped with adjustable levelling foot.

Fixing System	Top plate
Frame	Cold pressed steel plate
Wheel Tread	Nylon 6
Wheel Bearing Type	Precision ball bearings



Picture may differ from actual product

Features



Nylon wheel with double precision ball bearings



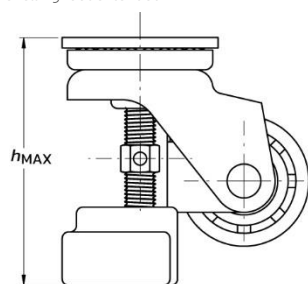
Pressed steel frames



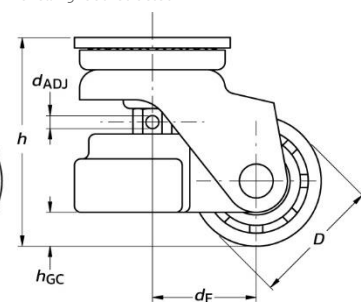
Rubber compound levelling foot
Adjustable with 17mm spanner (CMB-80) or 22mm spanner (CMB-300)

Technical Information

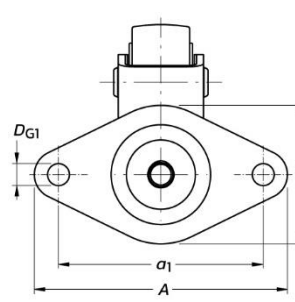
Levelling foot extended



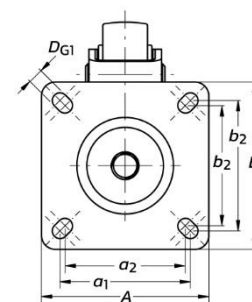
Levelling foot retracted



CMB Swivel Castors



Top Plate with 2 fitting holes
(applicable to CMB-80)



Rectangular Top Plate with
4 fitting holes
(applicable to CMB-300)

Order Code	Load Capacity (kg)	Dimensions (unless otherwise stated, dimensions are in millimetres)													Physical Mass (in grams)	
		A	B	a ₁	a ₂	b ₁	b ₂	D _{G1}	d _{ADJ}	D	h	h _{GC}	h _{MAX}	d _F		Swept Radius
CMB-80	80	110	60	89	–	–	–	9,5	5	50	80	13	95	40	65,2	720
CMB-300	300	120	120	93,5	86,5	93,5	86,5	11	6,5	75	128	25	148	65,5	103	2.820

Technical information and dimensions provided above are subject to tolerances